



Internal Combustion Engine Counterbalance Truck

H40 – H50 EVO

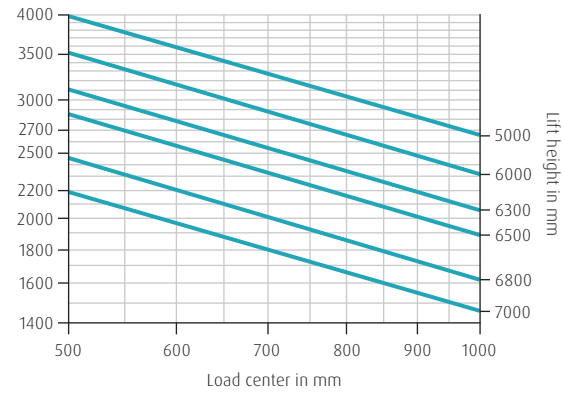
Capacity 4000-5000 kg | Series 394

Power Player with Soft Touch

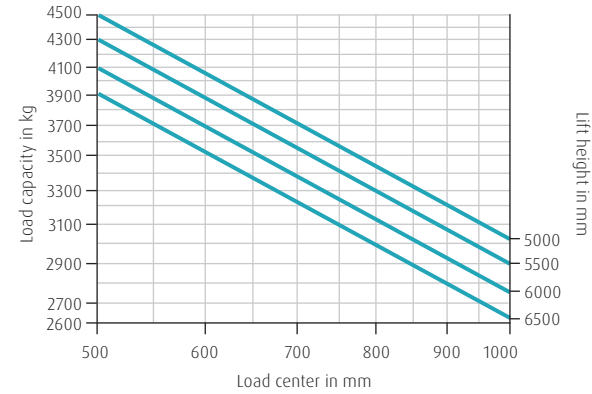
- Powerful engines, Linde Hydrostatic Drive and Linde Load Control ensure high handling performance – especially in long and challenging applications
- Long maintenance intervals and maintenance-free components lead to high truck availability and low service costs
- Slim mast profiles and overhead tilt cylinders guarantee excellent all-round visibility
- Rubber bearing decoupled drive axles reduce vibrations and strain for the driver

LOAD CAPACITY DIAGRAM

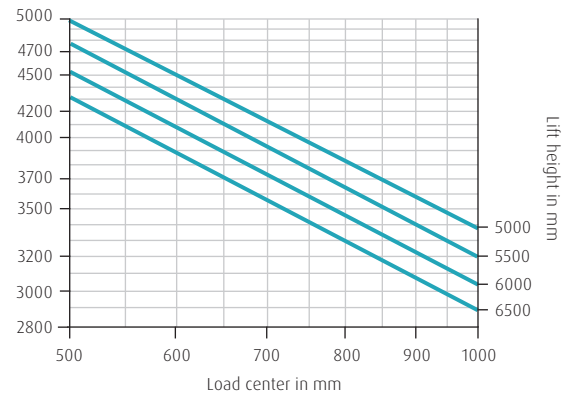
H40/500



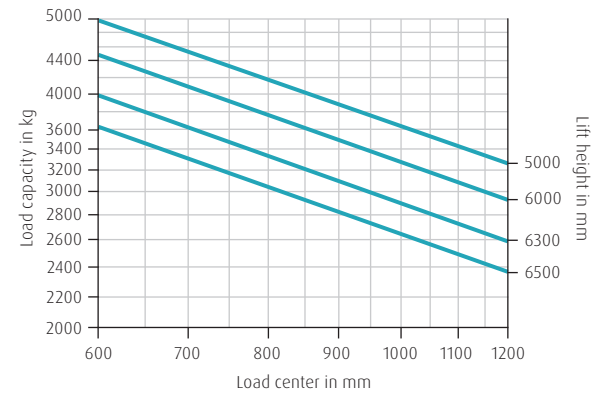
H45/500



H50/500



H50/600



STANDARD AND OPTIONAL EQUIPMENT

| Model/Equipment | | H40 - H50 D | H40 - H50 T |
|--------------------------|--|-------------|-------------|
| Operator Compartment | Ergonomic and save truck access due low entry step and handle bar at a-pillar and bonnet | ● | ● |
| | Innovative decoupling concept for lowest human vibrations | ● | ● |
| | Tilt adjustable steering column | ● | ● |
| | Overhead guard for maximum head clearance | ● | ● |
| | Operator's seat - mechanical quick weight adjustment | ● | ● |
| | Various seating options such as heating, air suspension, active seat ventilation, longitudinal suspension | ○ | ○ |
| | Operators seat - Swiveling seat | ○ | ○ |
| | Glare-free display, control lights for all major functions | ● | ● |
| | Top screen armoured glass | ○ | ○ |
| | Alloy cabin doors with openable window | ○ | ○ |
| Driving and Lifting | Din A4 illuminated clipboard | ○ | ○ |
| | Warm water heater including defog function/ air conditioning | ○ | ○ |
| | Radio, DAB+, MP3 Player including bluetooth hands-free equipment | ○ | ○ |
| | Linde Hydrostatic Drive PLUS - for low engine revolution and low fuel consumption | ● | ● |
| | Powerful 4-cylinder industrial engine from Doosan stage V certified ¹⁾ | ● | — |
| | Gear driven camshaft driven by maintenance-free, fatigue resistant spure gears | ● | — |
| | Powerful 6-cylinder engine stage V certified by Linde | — | ● |
| | LPG tank including fill level indicator in the display | — | ● |
| | Engine air filter including safety elements | ● | ● |
| | Linde Engine Protection System (LEPS) - warning, speed reduction under critical engine conditions | ● | ● |
| Mast | Hydraulic parking brake | ● | ● |
| | Oversized, variable displacement pump for lifting function - for low fuel consumption, low noise level and emissions | ● | ● |
| | Hydraulic filter concept - realizing 6000 hour hydraulic-oil change interval | ● | ● |
| | Power setting efficiency, economy, performance | ● | ● |
| | Super Elastic (SE) tyres | ● | ● |
| | Closed Shoulder tyres CS 20 | ○ | ○ |
| | Pneumatic tyres | ○ | ○ |
| | Antistatic, non marking tyres | ○ | ○ |
| | Anti-spray mudflaps front & rear | ○ | ○ |
| | Top mounted tilting cylinders | ● | ● |
| Attachments / Forks | Maintainance free resilient rubber mounting on mast and tilt jacks | ● | ● |
| | Best visibility through nested mast profiles on standard, duplex, triplex masts | ● | ● |
| | Standard, duplex and triplex masts from 3,000mm - 6,315mm lift | ● | ● |
| Safety | Electronic cushioning of mast tilt end position, forward and back | ● | ● |
| | Reinforced Linde forks - easy ajustable and long life time | ○ | ○ |
| | Different integrated attachments | ○ | ○ |
| | Street sweeper preparation | ○ | ○ |
| | Linde Curve Assist - automatic drive speed reduction when cornering | ● | ● |
| | Electrical seat belt monitoring - visual and acoustic feedback and adjustable speed reduction | ● | ● |
| | Linde Load Assist - increased safety at high lift heights | ● | ● |
| Digitalisation | BlueSpot & TruckSpot - optical warning signal for pedestrians and drivers | ○ | ○ |
| | Load weight indicator + function | ○ | ○ |
| | Linde Safety Pilot - load-dependent travel and lifting speed intervention plus additional functions | ○ | ○ |
| | Linde Safety Guard - truck to truck warning and truck to pedestrian warning | ○ | ○ |
| | Speed limitations (via switch, indoor-outdoor, load depending) | ○ | ○ |
| Operation/ Load Handling | Data Transmission Online | ○ | ○ |
| | Data Transmission Wifi | ○ | ○ |
| | Linde connect.desk - local fleet management with different functional modules | ○ | ○ |
| Operation/ Load Handling | Linde connect.cloud - fleet management as a service (hosted version) | ○ | ○ |
| | Pre-Operation-Check - individualizable daily check protocol for operational readiness | ○ | ○ |
| | Truck Call App - coordination of transport orders | ○ | ○ |
| Operation/ Load Handling | Double pedal control - Stepless acceleration and fast reversing | ● | ● |
| | Single pedal control - Stepless acceleration | ○ | ○ |
| | Linde Load Control - central levers fully integrated in the armrest for precise control of all hydraulic functions | ● | ● |
| Operation/ Load Handling | Individual Lever System | ○ | ○ |

1) EU-Version

TECHNICAL DATA (According to VDI 2198)

| | Characteristics | | | | | | | | | | | | | | |
|-----------------|---------------------------------|--|---|--------------------|-----------------------|-----------------------|-----------------------|-----------------------|-----------------------|-----------------------|-----------------------|------------------------|-----------------------|--------------------------------|-----------------------|
| | 1.1 | Manufacturer | | Linde | Linde | Linde | Linde | Linde | Linde | Linde | Linde | Linde | Linde | Linde | Linde |
| | 1.2 | Model designation | | H40 D | H45 D | H50/500 D | H50/600 D | H40 T | H45 T | H50/500 T | H50/600 T | H50/500 D-Container* | H50/500 D Beverage* | H50/500 CNG* | |
| Characteristics | 1.2a | Series | | 394-02 | 394-02 | 394-02 | 394-02 | 394-02 | 394-02 | 394-02 | 394-02 | 394-02 | 394-02 | 394-02 | 394-02 |
| | 1.3 | Power unit | | Diesel | Diesel | Diesel | Diesel | LPG | LPG | LPG | LPG | Diesel | Diesel | CNG | |
| | 1.4 | Operation | | Seat | Seat | Seat | Seat | Seat | Seat | Seat | Seat | Seat | Seat | Seat | |
| | 1.5 | Load capacity/Load | Q (t) | 4.0 | 4.5 | 4.99 | 4.99 | 4.0 | 4.5 | 4.99 | 4.99 | 4.99 | 4.99 | 4.99 | |
| | 1.6 | Load centre | c (mm) | 500 | 500 | 500 | 600 | 500 | 500 | 500 | 600 | 500 | 500 | 500 | |
| | 1.8 | Axle centre to fork face | x (mm) | 483 | 525 | 535 | 535 | 483 | 525 | 535 | 535 | 493 | 535 | 535 | |
| | 1.9 | Wheelbase | y (mm) | 1998 | 2038 | 2078 | 2078 | 1998 | 2038 | 2078 | 2078 | 2078 | 2078 | 2078 | |
| | Weights | 2.1 | Service weight | (kg) | 5804 | 6296 | 6587 | 6969 | 5984 | 6476 | 6767 | 7116 | 6647 | 6797 | 6767 |
| | | 2.2 | Axle load with load, front/rear | (kg) | 8654/1150 | 9580/1216 | 10382/1195 | 10644/1315 | 8709/1275 | 9635/1341 | 10437/1320 | 10653/1453 | 10348/1289 | 10543/1244 | 10437/1320 |
| 2.3 | | Axle load without load, front/rear | (kg) | 2686/3118 | 2817/3479 | 2907/3680 | 2928/4041 | 2741/3243 | 2872/3604 | 2962/3805 | 2937/4179 | 2973/3674 | 3068/3729 | 2962/3805 | |
| Wheels/Tyres | 3.1 | Tyres rubber, SE, pneumatic, polyurethane | | SE | SE | SE | SE | SE | SE | SE | SE | SE | SE | SE | |
| | 3.2 | Tyre size, front | | 250/70-15 (250-15) | 315/70-15 (300-15) | 315/70-15 (300-15) | 315/70-15 (300-15) | 250/70-15 (250-15) | 315/70-15 (300-15) | 315/70-15 (300-15) | 315/70-15 (300-15) | 355/45-15 (28x12.5-15) | 315/70-15 (300-15) | 315/70-15 (300-15) | |
| | 3.3 | Tyre size, rear | | 250/70-15 (250-15) | 250/70-15 (250-15) | 250/70-15 (250-15) | 250/70-15 (250-15) | 250/70-15 (250-15) | 250/70-15 (250-15) | 250/70-15 (250-15) | 250/70-15 (250-15) | 250/70-15 (250-15) | 250/70-15 (250-15) | 250/70-15 (250-15) | |
| | 3.5 | Wheels, number front/rear (x = driven) | | 2x/2 | 2x/2 | 2x/2 | 2x/2 | 2x/2 | 2x/2 | 2x/2 | 2x/2 | 2x/2 | 2x/2 | 2x/2 | |
| | 3.6 | Track width, front | b10 (mm) | 1221 | 1190 | 1190 | 1190 | 1221 | 1190 | 1190 | 1190 | 1190 | 1190 | 1190 | |
| | 3.7 | Track width, rear | b11 (mm) | 1122 | 1122 | 1122 | 1122 | 1122 | 1122 | 1122 | 1122 | 1122 | 1122 | 1122 | |
| | Dimensions | 4.1 | Mast/fork carriage tilt, forward/backward | a/b (°) | 5.0/9.0 ¹⁾ | 5.0/9.0 ¹⁾ | 5.0/9.0 ¹⁾ | 5.0/9.0 ¹⁾ | 5.0/9.0 ¹⁾ | 5.0/9.0 ¹⁾ | 5.0/9.0 ¹⁾ | 5.0/9.0 ¹⁾ | 5.0/9.0 ¹⁾ | 5.0/9.0 ¹⁾ | 5.0/9.0 ¹⁾ |
| 4.2 | | Height of mast, lowered | h1 (mm) | 2370 ²⁾ | 2421 ²⁾ | 2421 ²⁾ | 2421 ²⁾ | 2370 ²⁾ | 2421 ²⁾ | 2421 ²⁾ | 2421 ²⁾ | 2160 | 2776 ²⁾ | 2421 ²⁾ | |
| 4.3 | | Free lift | h2 (mm) | 150 | 150 | 150 | 150 | 150 | 150 | 150 | 150 | 1310 | 150 | 150 | |
| 4.4 | | Lift | h3 (mm) | 3000 | 3000 | 3000 | 2800 | 3000 | 3000 | 3000 | 2800 | 4045 | 3800 | 3000 | |
| 4.5 | | Height of mast, extended | h4 (mm) | 3795 | 3916 | 3916 | 3816 | 3795 | 3916 | 3916 | 3816 | 4895 | 4716 | 3916 | |
| 4.7 | | Height of overhead guard (cabin) | h6 (mm) | 2383 | 2416 | 2416 | 2416 | 2383 | 2416 | 2416 | 2416 | 2220 | 2816 | 2416 | |
| 4.8 | | Height of seat/stand on platform | h7 (mm) | 1226 | 1264 | 1264 | 1264 | 1226 | 1264 | 1264 | 1264 | 1151 | 1664 | 1264 | |
| 4.12 | | Towing coupling height | h10 (mm) | 703 | 726 | 719 | 718 | 703 | 726 | 719 | 718 | 733 | 719 | 719 | |
| 4.19 | | Overall length | l1 (mm) | 3984 | 4066 | 4116 | 4396 | 3984 | 4066 | 4116 | 4396 | 4074 | 4116 | 4116 | |
| 4.20 | | Length to fork face | l2 (mm) | 2984 | 3066 | 3116 | 3196 | 2984 | 3066 | 3116 | 3196 | 3074 | 3116 | 3116 | |
| 4.21 | | Overall width | b1/b2 (mm) | 1446/1423 | 1448/1423 | 1448/1423 | 1448/1423 | 1446/1423 | 1448/1423 | 1448/1423 | 1448/1423 | 1487/1423 | 1448/1423 | 1448/1423 | |
| 4.22 | | Fork dimensions DIN ISO 2331 | s/e/l (mm) | 50 x 120 x 1000 | 50 x 120 x 1000 | 60 x 130 x 1000 | 60 x 130 x 1200 | 50 x 120 x 1000 | 50 x 120 x 1000 | 60 x 130 x 1000 | 60 x 130 x 1200 | 60 x 130 x 1000 | 60 x 130 x 1000 | 60 x 130 x 1000 | |
| 4.23 | | Fork carriage to ISO 2328, class/type A, B | | 3A | 3A | 3A | 3A | 3A | 3A | 3A | 3A | 3A | 3A | 3A | |
| 4.24 | | Width of fork carriage | b3 (mm) | 1350 | 1350 | 1350 | 1350 | 1350 | 1350 | 1350 | 1350 | 1350 | 1350 | 1350 | |
| 4.31 | | Ground clearance, below mast | m1 (mm) | 158 | 205 | 203 | 203 | 158 | 205 | 203 | 203 | 146 | 203 | 203 | |
| 4.32 | | Ground clearance, centre of wheelbase | m2 (mm) | 201 | 236 | 235 | 234 | 201 | 236 | 235 | 234 | 207 | 235 | 235 | |
| 4.33 | | Aisle width with pallet 1000 x 1200 across forks | Ast (mm) | 4355 ³⁾ | 4433 ³⁾ | 4480 ³⁾ | 4560 ³⁾ | 4355 ³⁾ | 4433 ³⁾ | 4480 ³⁾ | 4560 ³⁾ | 4438 ³⁾ | 4480 ³⁾ | 4480 ³⁾ | |
| 4.34 | | Aisle width with pallet 800 x 1200 along forks | Ast (mm) | 4555 ³⁾ | 4633 ³⁾ | 4680 ³⁾ | 4760 ³⁾ | 4555 ³⁾ | 4633 ³⁾ | 4680 ³⁾ | 4760 ³⁾ | 4638 ³⁾ | 4680 ³⁾ | 4680 ³⁾ | |
| 4.35 | | Turning radius | Wa (mm) | 2672 | 2708 | 2745 | 2825 | 2672 | 2708 | 2745 | 2825 | 2745 | 2745 | 2745 | |
| 4.36 | Minimum pivoting point distance | b13 (mm) | 700 | 700 | 700 | 700 | 700 | 700 | 700 | 700 | 700 | 700 | 700 | | |
| Performance | 5.1 | Travel speed, with/without load | (km/h) | 21/21 | 24/24 | 24/24 | 24/24 | 21/21 | 24/24 | 24/24 | 24/24 | 20/20 | 24/24 | 24/24 | |
| | 5.2 | Lifting speed, with/without load | (m/s) | 0.53/0.57 | 0.53/0.57 | 0.5/0.53 | 0.5/0.53 | 0.53/0.57 | 0.53/0.57 | 0.5/0.53 | 0.5/0.53 | 0.5/0.53 | 0.5/0.53 | 0.5/0.53 | |
| | 5.3 | Lowering speed, with/without load | (m/s) | 0.56/0.53 | 0.56/0.53 | 0.54/0.51 | 0.54/0.51 | 0.56/0.53 | 0.56/0.53 | 0.54/0.51 | 0.54/0.51 | 0.54/0.51 | 0.54/0.51 | 0.54/0.51 | |
| | 5.5 | Tractive force, with/without load | (N) | 28541/20570 | 25285/21841 | 25285/22375 | 25285/22673 | 28540/21160 | 25285/22350 | 25285/23040 | 25285/23105 | 30202/23120 | 25064/23866 | 25285/23040 | |
| | 5.7 | Climbing ability, with/without load | (%) | 29.0/34.0 | 22.0/32.0 | 21.0/32.0 | 20.0/30.0 | 28.0/33.0 | 22.0/32.0 | 20.0/32.0 | 19.0/30.0 | 28.0/36.0 | 22.0/36.0 | 20.0/32.0 | |
| | 5.9 | Acceleration time, with/without load | (s) | 5.6/4.9 | 5.7/5.0 | 5.8/5.1 | 5.9/5.2 | 5.8/5.0 | 5.9/5.1 | 6.0/5.2 | 6.1/5.3 | 5.8/5.1 | 5.8/5.1 | 6.0/5.2 | |
| | 5.10 | Service brake | | hydrostatic | hydrostatic | hydrostatic | hydrostatic | hydrostatic | hydrostatic | hydrostatic | hydrostatic | hydrostatic | hydrostatic | hydrostatic | |
| Drive | 7.1 | Engine manufacturer/type | | Doosan D24 | Doosan D24 | Doosan D24 | Doosan D24 | Linde | Linde | Linde | Linde | Doosan D24 | Doosan D24 | Linde | |
| | 7.2 | Engine performance according to ISO 1585 | (kW) | 55 | 55 | 55 | 55 | 51 | 51 | 51 | 51 | 55 | 55 | 49 | |
| | 7.3 | Rated speed | (1/min) | 2300 | 2300 | 2300 | 2300 | 2300 | 2300 | 2300 | 2300 | 2300 | 2300 | 2300 | |
| | 7.4 | Number of cylinders/displacement | (-/cm ³) | 4.0/2393.0 | 4.0/2393.0 | 4.0/2393.0 | 4.0/2393.0 | 6.0/3597.0 | 6.0/3597.0 | 6.0/3597.0 | 6.0/3597.0 | 4.0/2393.0 | 4.0/2393.0 | 6.0/3597.0 | |
| | 7.5 | Fuel consumption according to DIN EN 16796 | (l/h) | 3.8 | 4.0 | 4.2 | 4.3 | 3.9 | 4.1 | 4.3 | 4.4 | 4.2 | 4.2 | 4.2 | |
| | 7.5b | Fuel consumption according to DIN EN 16796 | (m ³ /h) | - | - | - | - | - | - | - | - | - | - | 5.4 (H); 5.8 (L) ⁴⁾ | |
| Others | 10.1 | Operating pressure for attachments | (bar) | 170 | 170 | 170 | 170 | 170 | 170 | 170 | 170 | 170 | 170 | 170 | |
| | 10.2 | Oil flow for attachments | (l/min) | 48 | 48 | 48 | 48 | 48 | 48 | 48 | 48 | 48 | 48 | 48 | |
| | 10.7 | Sound pressure level LpAZ (at the driver's seat) | (dB(A)) | 79 | 79 | 79 | 79 | 77 | 77 | 77 | 77 | 79 | 79 | 77 | |
| | 10.8 | Towing coupling, design/type, DIN 15 170 | | similar to form H | similar to form H | similar to form H | similar to form H | similar to form H | similar to form H | similar to form H | similar to form H | similar to form H | similar to form H | similar to form H | |
| | 11.2 | Towing coupling, design/type, DIN 15 170 | | 1.58 | 1.54 | 1.48 | 1.48 | 1.65 | 1.59 | 1.53 | 1.53 | 1.54 | 1.5 | 1.53 | |

1) Lift height and equipment can alter rear mast tilt angle
 2) With 150 mm free lift on standard mast
 3) Including a 200 mm (min.) operating aisle clearance
 4) (H)= high quality, (L)= low quality

5) Technical specifications for LPG version or other tonnage like H40/45/H50-600 on request
 6) Technical specifications for LPG version or other tonnage like H40/45 on request
 7) Technical specifications for H40/H45/H50-600 on request

MAST TABLES

STANDARD MAST (in mm)

| Series | 189 | | | | | | | | | | | |
|---------------------|----------|----------|----------|----------|----------|----------|----------|----------|----------|----------|----------|----------|
| Lift | h3: 3000 | | h3: 3100 | | h3: 3700 | | h3: 4100 | | h3: 4400 | | h3: 5000 | |
| Height measurements | h1: 2371 | h2: 150 | h1: 2421 | h2: 150 | h1: 2721 | h2: 150 | h1: 2921 | h2: 150 | h1: 3071 | h2: 150 | h1: 3371 | h2: 150 |
| | h3: 3000 | h4: 3796 | h3: 3100 | h4: 3896 | h3: 3700 | h4: 4496 | h3: 4100 | h4: 4896 | h3: 4400 | h4: 5196 | h3: 5000 | h4: 5796 |
| Model | | | | | | | | | | | | |
| H 40 | ○ | | ○ | | ○ | | ○ | | ○ | | ○ | |

| Series | 189 | | | | | | | | | | | |
|---------------------|----------|----------|----------|----------|----------|----------|----------|----------|----------|----------|----------|----------|
| Lift | h3: 3000 | | h3: 3100 | | h3: 3700 | | h3: 4100 | | h3: 4400 | | h3: 5000 | |
| Height measurements | h1: 2420 | h2: 150 | h1: 2470 | h2: 150 | h1: 2770 | h2: 150 | h1: 2970 | h2: 150 | h1: 3120 | h2: 150 | h1: 3420 | h2: 150 |
| | h3: 3000 | h4: 3915 | h3: 3100 | h4: 4015 | h3: 3700 | h4: 4615 | h3: 4100 | h4: 5015 | h3: 4400 | h4: 5315 | h3: 5000 | h4: 5915 |
| Model | | | | | | | | | | | | |
| H 45 | ○ | | ○ | | ○ | | ○ | | | | | |
| H 50 | ○ | | ○ | | ○ | | ○ | | | | | |

| Series | 189 | | | | | | | | | |
|---------------------|----------|----------|----------|----------|----------|----------|----------|----------|----------|----------|
| Lift | h3: 3200 | | h3: 3700 | | h3: 4100 | | h3: 4400 | | h3: 5000 | |
| Height measurements | h1: 2619 | h2: 150 | h1: 2869 | h2: 150 | h1: 3069 | h2: 150 | h1: 3219 | h2: 150 | h1: 3519 | h2: 150 |
| | h3: 3200 | h4: 4215 | h3: 3700 | h4: 4715 | h3: 4100 | h4: 5115 | h3: 4400 | h4: 5415 | h3: 5000 | h4: 6015 |
| Model | | | | | | | | | | |
| H 45 | ○ | | ○ | | ○ | | ○ | | | |

DUPLEX MAST (in mm)

| Series | 189 | | | | | | | | | | | |
|---------------------|----------|----------|----------|----------|----------|----------|----------|----------|----------|----------|----------|----------|
| Lift | h3: 3030 | | h3: 3130 | | h3: 3730 | | h3: 3030 | | h3: 3130 | | h3: 3730 | |
| Height measurements | h1: 2326 | h2: 1561 | h1: 2376 | h2: 1611 | h1: 2676 | h2: 1911 | h1: 2375 | h2: 1460 | h1: 2425 | h2: 1510 | h1: 2725 | h2: 1810 |
| | h3: 3030 | h4: 3795 | h3: 3130 | h4: 3895 | h3: 3730 | h4: 4495 | h3: 3030 | h4: 3945 | h3: 3130 | h4: 4045 | h3: 3730 | h4: 4645 |
| Model | | | | | | | | | | | | |
| H 40 | ○ | | ○ | | ○ | | — | | — | | — | |
| H 45 | — | | — | | — | | ○ | | ○ | | ○ | |
| H 50 | — | | — | | — | | ○ | | ○ | | ○ | |

TRIPLEX MAST (in mm)

| Series | 189 | | | | | | | | | | | | | | | |
|---------------------|----------|----------|----------|----------|----------|----------|----------|----------|----------|----------|----------|----------|----------|----------|----------|----------|
| Lift | h3: 4525 | | h3: 4675 | | h3: 5365 | | h3: 5865 | | h3: 4525 | | h3: 4675 | | h3: 5365 | | h3: 5865 | |
| Height measurements | h1: 2326 | h2: 1564 | h1: 2376 | h2: 1614 | h1: 2626 | h2: 1864 | h1: 2826 | h2: 2064 | h1: 2375 | h2: 1460 | h1: 2425 | h2: 1510 | h1: 2675 | h2: 1760 | h1: 2875 | h2: 1960 |
| | h3: 4525 | h4: 5287 | h3: 4675 | h4: 5437 | h3: 5365 | h4: 6127 | h3: 5865 | h4: 6627 | h3: 4525 | h4: 5440 | h3: 4675 | h4: 5590 | h3: 5365 | h4: 6280 | h3: 5865 | h4: 6780 |
| Model | | | | | | | | | | | | | | | | |
| H 40 | ○ | | ○ | | ○ | | ○ | | — | | — | | — | | — | |
| H 45 | — | | — | | — | | — | | ○ | | ○ | | ○ | | ○ | |
| H 50 | — | | — | | — | | — | | ○ | | ○ | | ○ | | ○ | |

| Series | 189 | | | | | | | |
|---------------------|----------|----------|----------|----------|----------|----------|----------|----------|
| Lift | h3: 4225 | | h3: 4615 | | h3: 5065 | | h3: 5565 | |
| Height measurements | h1: 2375 | h2: 1360 | h1: 2525 | h2: 1510 | h1: 2675 | h2: 1660 | h1: 2875 | h2: 1860 |
| | h3: 4225 | h4: 5240 | h3: 4615 | h4: 5630 | h3: 5065 | h4: 6080 | h3: 5565 | h4: 6580 |
| Model | | | | | | | | |
| H 50/ 600 | ○ | | ○ | | ○ | | ○ | |

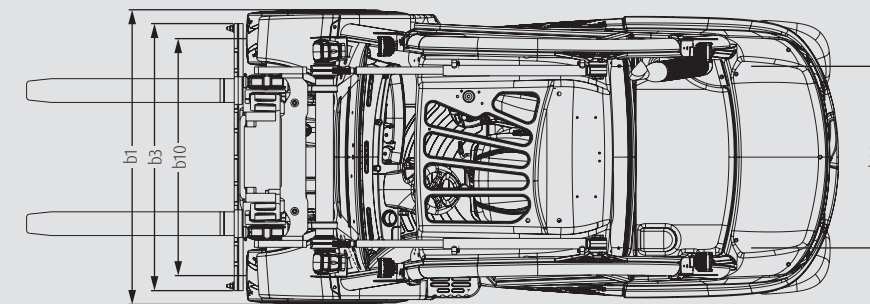
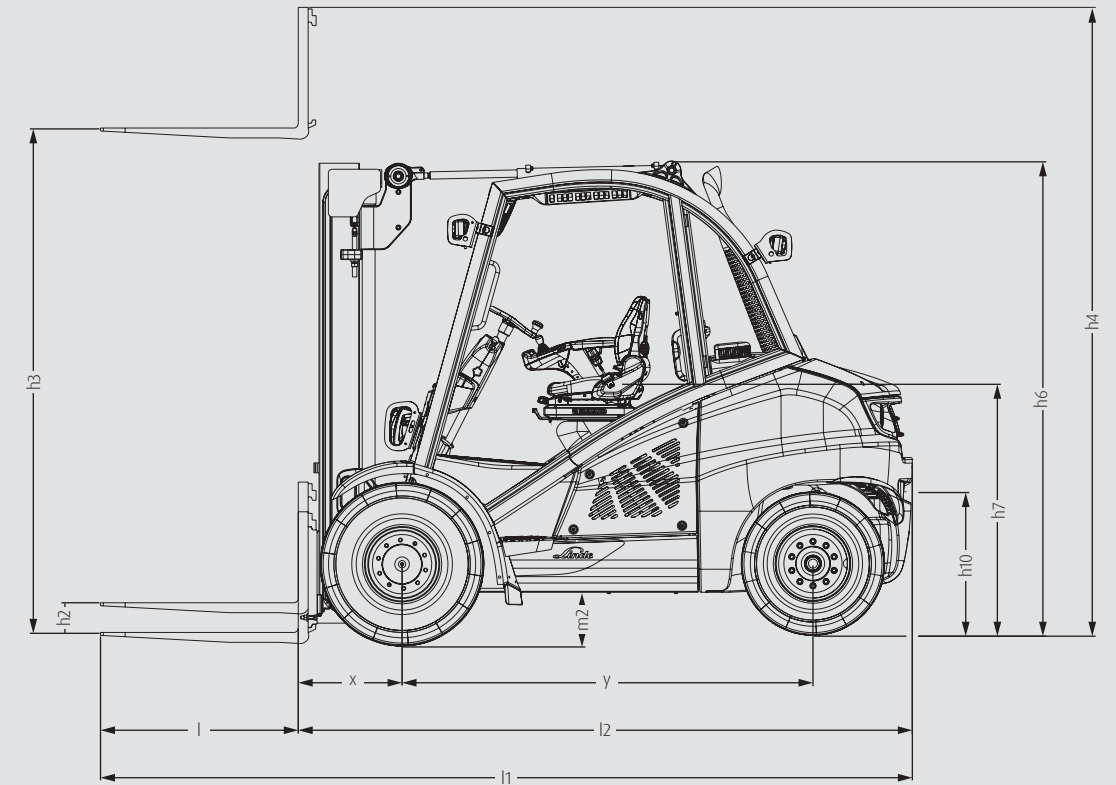
○ Optional equipment

— not available

h1: Height of mast, lowered
h4: Height of mast, extended

h2: Free lift

h3: Lift



CHARACTERISTICS



Linde clear-view mast

Safety

- Driver is surrounded by the Linde Protector Frame – a closed unit formed from the frame and the roof
- Slim lift mast profile and overhead tilt cylinders ensure excellent allround visibility
- Linde Curve Assist prevents the truck from moving at an excessive speed around bends
- High residual capacity provides outstanding safety while bearing heavy loads



Linde operator compartment

Ergonomics

- Built around the operator's ergonomic requirements, design, operation and technology enable a maximum level of protection and health-friendly working
- Spacious, easily accessible driver's cab offers plenty of legroom and excellent all-round-visibility
- Resilient mounting of front axle and tilt cylinders isolate shocks and noise
- Drivers can control all lift mast functions easily with their fingertips, thanks to the Linde Load Control and its ergonomic design



Linde Load Control

Handling

- Modern diesel, LPG and CNG gas engines as well as the Linde Hydrostatic Drive and the dual pedal control assure smooth movement in every situation
- Driver can effortlessly and precisely control all truck and mast movements thanks to the Linde Load Control
- Less engine revolutions for the working hydraulic due to the variable displacement pump, while driving it delivers only oil for steering and saves energy
- Minimized fuel consumption and exhaust emissions guarantee cost-effective, sustainable operation



Linde Robust truck concept

Service

- Well-thought-out service concept results in a high truck availability
- Robust Linde Hydrostatic Drive operates without transmission or drum brakes, therefore saving costs for expensive spare parts and maintenance
- Long maintenance intervals, service of particle filter every 10.000 hours
- Many moving part contact points such as axial rotation or mast and tilt cylinder bearing are completely maintenance-free

Subject to modification in the interest of progress. Illustrations and technical details could include options and not binding for actual constructions. All dimensions subject to usual tolerances.

Linde Material Handling

Linde

ncnielsen

Nørregade 66, DK-7860 Balling | Tlf.: +45 99 83 83 83
nc-nielsen.dk | info@nc-nielsen.dk